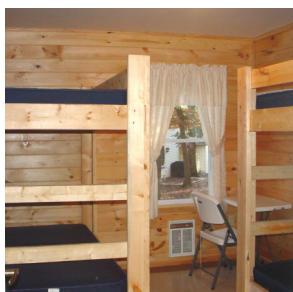


Mahaffey Camp Facilities

The Mahaffey Camp and Conference facilities are rustic, set in the Western Pa foothills, surrounded by beautiful mountains. Over 200 private owned cottages, 3 dormitories, and 2 longhouses, many chalets, along with 3 RV trailer and tent areas comprise the accommodations for Family Camp in July.

Our Dining Hall serves three meals daily during Family Camp and is air-conditioned. Sandwiches, snacks and limited grocery items are available at the Camp Store. The campground continues to upgrade its facilities, as funds are available.



Reservations for Family Camp July 16 – 25, 2010	
Dormitory Rates - 2010	
<p>Dorms 2 or 4 – Single Occupancy</p> <ul style="list-style-type: none"> • 10 days \$120.00 • per night \$ 16.00 <p>ROOMS ARE PRICED FOR ONE PERSON EXTRA PERSON PER DAY \$ 5.00</p>	<p>Dorm 5 - 1st, 2nd, 3rd Floor Rooms</p> <p>Double Occupancy <i>Remodeled Rooms</i></p> <ul style="list-style-type: none"> • 10 days \$295.00 • per night \$ 40.00 <p>EXTRA PERSON PER DAY \$ 7.00</p> <p>Dorm 5 Rooms are limited in availability <i>Reservations are honored on date/deposit received basis</i></p>
<p>Longhouse - Double Occupancy <i>Remodeled Rooms</i></p> <ul style="list-style-type: none"> • 10 days \$235.00 • per night \$ 30.00 <p>EXTRA PERSON PER DAY \$ 5.00</p>	
<p>For Reservations of Dorm or Longhouse Room contact: Mahaffey Camp Office Email: office@mahaffeycamp.com (814) 277-5544</p>	
Trailer and Tent Rates - 2010	
<p>North Area – Sites 2 – 35 water and electric only (30 amp electric connect is <u>not</u> permitted on these sites)</p> <ul style="list-style-type: none"> • 10 days \$ 225.00 • per night \$ 29.00 <p>North Area – sites 27, 28, 29, 36</p> <ul style="list-style-type: none"> • 10 days \$ 260.00 <p>hookup includes water & 30 amp electric connection; no sewage connection</p> <p>Tents – no hookup</p> <ul style="list-style-type: none"> • per night \$ 15.00 <p>designated tent area only; if tenting on an RV site the RV rate for the site applies</p>	<p>East Sites 1 -11; North sites 80 – 96 West Sites 1a - 12a; & Sites 2 - 85 <i>pending sewage installation</i></p> <ul style="list-style-type: none"> • 10 days \$ 290.00 • per night \$ 32.00 <p>hookup includes water, 30 amp electric connection and sewage</p> <p>East Sites - 12 – 67; West sites with no sewage installation</p> <ul style="list-style-type: none"> • 10 days \$ 260.00 • per night \$ 32.00
<p>West Area for Storage and Occupancy not including Family Camp</p> <ul style="list-style-type: none"> • Winter Storage Permit for complete year – West Area only \$250.00 with no occupancy • Short Stay Storage Permit - \$1.00 per day available from May 1 – October 31 (minimum 60 days) • Short Stay Occupancy in conjunction with Winter Storage Permit / Short Stay Permit - Occupancy fee of \$5.00 per night available from May 1 – October 31, not including Family Camp. This charge pertains to units here under Short Stay Permit or Winter Storage Permit <p>Note: There is a waiting list for Winter Storage sites – please contact the Camp office for details</p>	
<p>For Reservations of an RV or Tent contact: Mahaffey Camp Office Email: office@mahaffeycamp.com (814) 277-5544</p>	

Please note:
Registration letter will clarify fee assessed for RV site assigned for 2010 as Sewage installation is pending for some sites in the East & West areas